



## **AOM SPRAY EQUIPMENT**

5005 SANBUSCO DR. NE

RIO RANCHO, NM 87144

PHONE: 505-867-1946

FAX: 505-867-1948



### **GRAVITY FEED SPRAY GUN**

#### **5008 HVLP WB**

#### **TECHNICAL DATA**

**Maximum spray air pressure: 3 bar (43 PSI)**

**Suggested air pressure: 2 bar (29 PSI)**

**Weight: 430 grams for gun only**




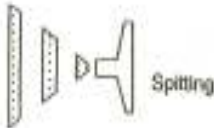
**Spray gun distance to object: about 15 - 20 cm**

**Recommended viscosities on a Ford #4 viscosity cup 15 - 23 seconds.**

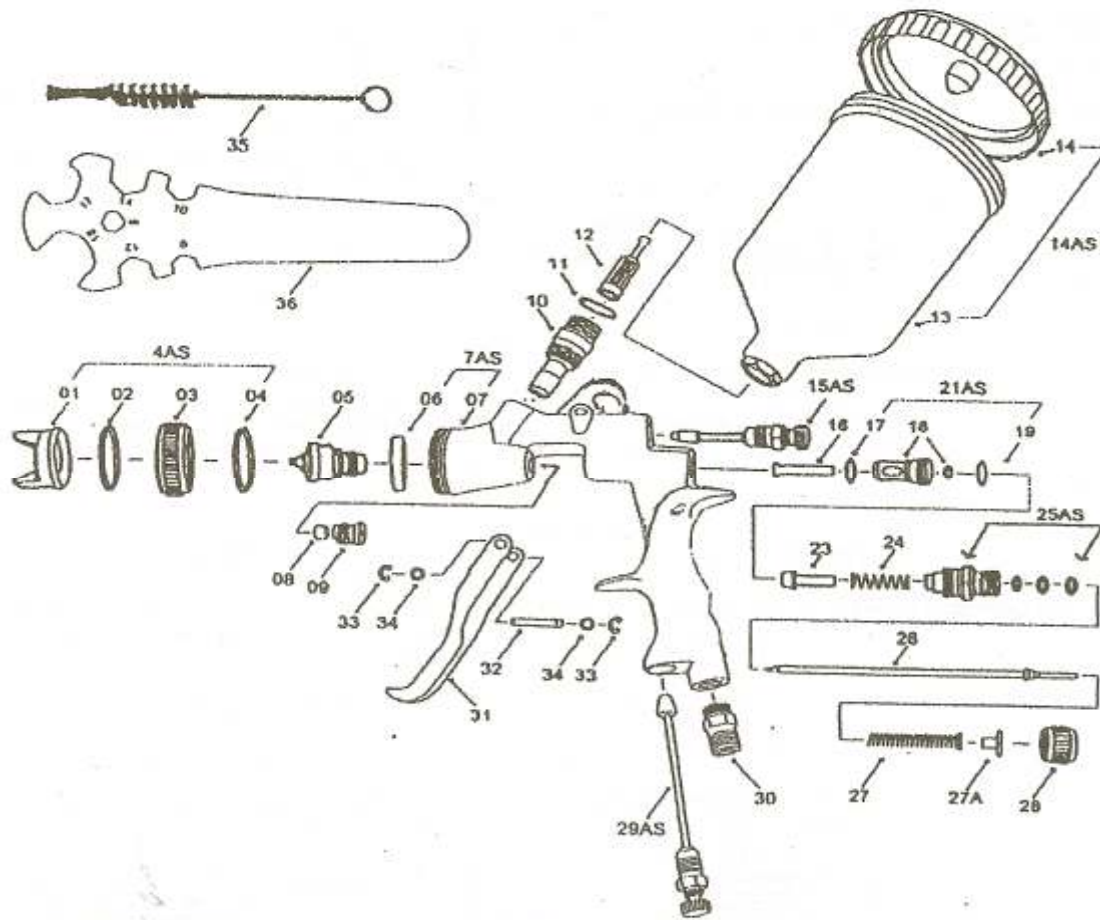
**For more detail on viscosities see your Paint Supplier**

**Nozzle sizes available: 1.3mm, 1.4mm, 1.5mm, 1.8mm, 2.0mm, 2.5mm**

## TROUBLESHOOTING

SPRAY PATTERN/ CONDITION	PROBLEM	SOLUTION
	One side of nozzle wing is clogged.	Soak nozzle in solvent to loosen clog, then blow air through until clean. To clean orifices use a broom straw or toothpick. Never try and detach dried material with sharp tool.
	A.) Loose air nozzle. B.) Material around outside of air nozzle has dried.	A.) Tighten air nozzle. B.) Take off air nozzle and wipe off fluid tip, using rag moistened with thinner.
	A.) Atomization air pressure is set too high. B.) Trying to spray a thin material in too wide a pattern.	A.) Reduce air pressure. B.) Increase material control by turning fluid control screw to left, while reducing spray width by turning spray width adjustment screw to right.
	A.) Packing around needle valve is dried out. B.) Fluid nozzle loosely installed, or dirt between nozzle and body. C.) Loose or defective swivel nut on siphon cup.	A.) Back up knurled nut, put a few drops of machine oil on packing, re-tighten nut. B.) Take off fluid nozzle, clean rear of nozzle and seat in gun body. Replace nozzle and bring in tight to body. C.) Tighten or change out swivel nut
Improper spray pattern.	A.) Gun improperly adjusted B.) Dirty air cap C.) Fluid tip obstructed D.) Sluggish Needle	A.) Readjust gun. Follow instructions carefully. B.) Clean air cap C.) Clean D.) Lubricate.
Unable to get round spray.	Fan adjustment screw not seating properly.	Clean or replace.
Will not spray.	A.) No air pressure at gun. B.) Fluid pressure too low with internal mix cap and pressure tank. C.) Fluid control screw not open enough. D.) Fluid too heavy for suction feed.	A.) Check air supply and air lines. B.) Increase fluid pressure at tank. C.) Open fluid control screw. D.) Thin material or change to pressure feed.
Fluid leakage from packing nut.	A.) Packing nut loose. B.) Packing worn or dry.	A.) Tighten, but not so tight as to grip needle. B.) Replace packing or lubricate
Dripping from fluid tip.	A.) Dry packing. B.) Sluggish needle C.) Tight packing nut. D.) Worn fluid nozzle or needle.	A.) Lubricate. B.) Lubricate. C.) Adjust D.) For pressure feed, replace with new fluid nozzle and needle.
Thin, sandy coarse finish	A.) Gun held too far from surface B.) Atomization pressure set too high	A.) Move gun closer to surface. B.) Adjust atomization pressure
Thick, dimpled finish resembling orange peel	Gun held too close to surface	Move gun further from surface

# PARTS LIST



ITEM NO.	DESCRIPTION	ITEM NO.	DESCRIPTION
PART01	Air Cap	PART23	Air Valve
PART02	Teflon Packing	PART24	Spring for Valve
PART03	Brass Cap	PART25AS	Fluid Needle Guide
PART04	Nylon Packing	PART26	Fluid Needle Set
PART05	Fluid Nozzle	PART27	Fluid Needle Spring
PART06	Aluminum Washer	PART27A	Spring Washer
PART07	Gun Body	PART28	Fluid Adjustment Knob
PART08	Needle Packing	PART29AS	Air Adjustment Valve Set
PART09	Needle Packing Nut	PART30	Air Hose Joint
PART10	Fluid Nipple	PART31	Trigger
PART11	Cup Washer	PART32	Trigger Pin
PART12	Material Strainer	PART33	Locking Ring
PART13	Nylon Cup	PART34	Trigger Washer
PART14	Cup Lid Set	PART35	Brush
PART15AS	Pattern Adjustment Valve Set	PART36	Spanner
PART16	Air Valve Shaft		
PART17	O-Ring		
PART18	Brass Air Valve Body		
PART19	O-Ring		