



AOM Spray Equipment
5005 Sanbusco Dr. NE
Rio Rancho, NM 87144
Phone: 505-867-1946
Fax: 505-867-1948

*Instruction / Manual for the
Glazing / Gravity Feed HVLP Spray Gun*



Air Nozzle

828- W

TECHNICAL DATA

Air Inlet: 1/4" NPS
Fluid Inlet: M 14 x 1.0 P
Air Pressure Inlet: 3 bar 43 PSI
Air Consumption: 5 CFM
High Transfer Efficiency (65%) with low air consumption
200cc Aluminum Cup

A. Starting:

- a. Use spanner to tighten the nozzle.
- b. Check for correct tightening of stuffing box to avoid any air leakage.
- c. Before using this gun, make sure that it is carefully flushed w/solvent.

B. Adjustment of Spray Width:

Rotate the stepless adjuster to adjust spray width. The spray pattern can be altered from flat to round spray as required.

C. Air Quantity Control:

Adjust the stepless air micrometer to set the air to material ratio.

D. Exchange of Nozzle Set:

Make sure that the complete nozzle set is exchanged when changing to another nozzle.

E. Screw on Needle Seal:

The needle seal is effected by a Teflon seal and a needle packing with self-tensioning compression spring.

F. Cleaning and Gun Care:

- a. Flush gun thoroughly with solvent.
- b. Clean air nozzle with brush. Never place the whole gun in solvent.
- c. Clogged holes should never be cleaned with hard objects as the smallest amount of damage may badly influence the spray pattern.
- d. Packing must be slightly lubricated after cleaning of gun.

*****WARNING*****

**NEVER AIM SPRAY GUNS AT PEOPLE
SOLVENTS AND THINNERS CAN CAUSE INJURY**

EXPLODED VIEW DRAWING

Figure #1 Insert part 07B (brass pin) into the hole of part 07A (nozzle seat) which does not go through hole

Figure #2 Put part 07C (teflon cover) onto part 07A properly.

Figure #3 Now you will see there are three holes.

Figure #4 Insert part 07 (white seat) into part 07A from reverse side.

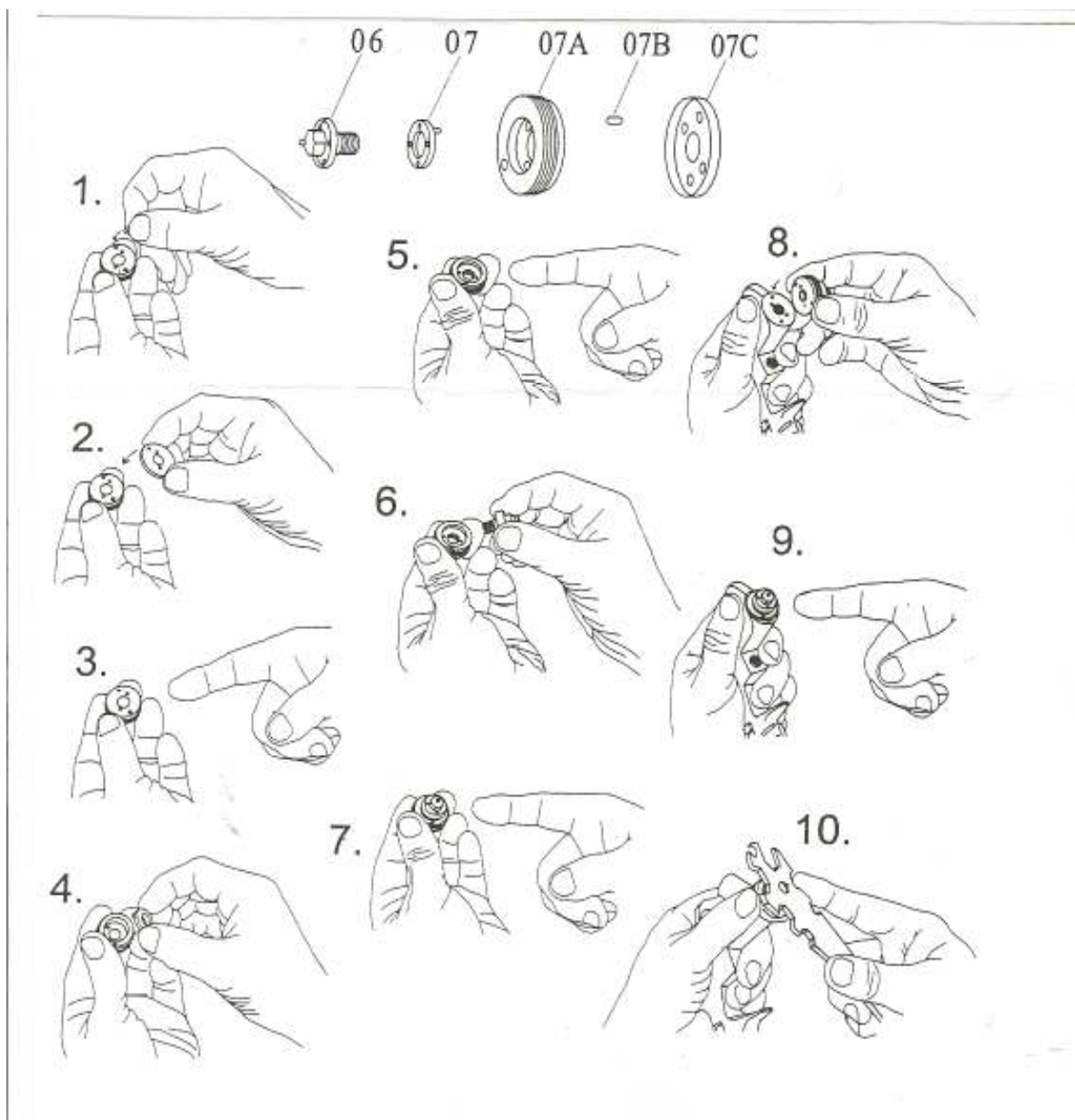
Figure #5 Make sure the nipple of part 07 comes out of the hole which is next to the inserted 07B (brass pin).

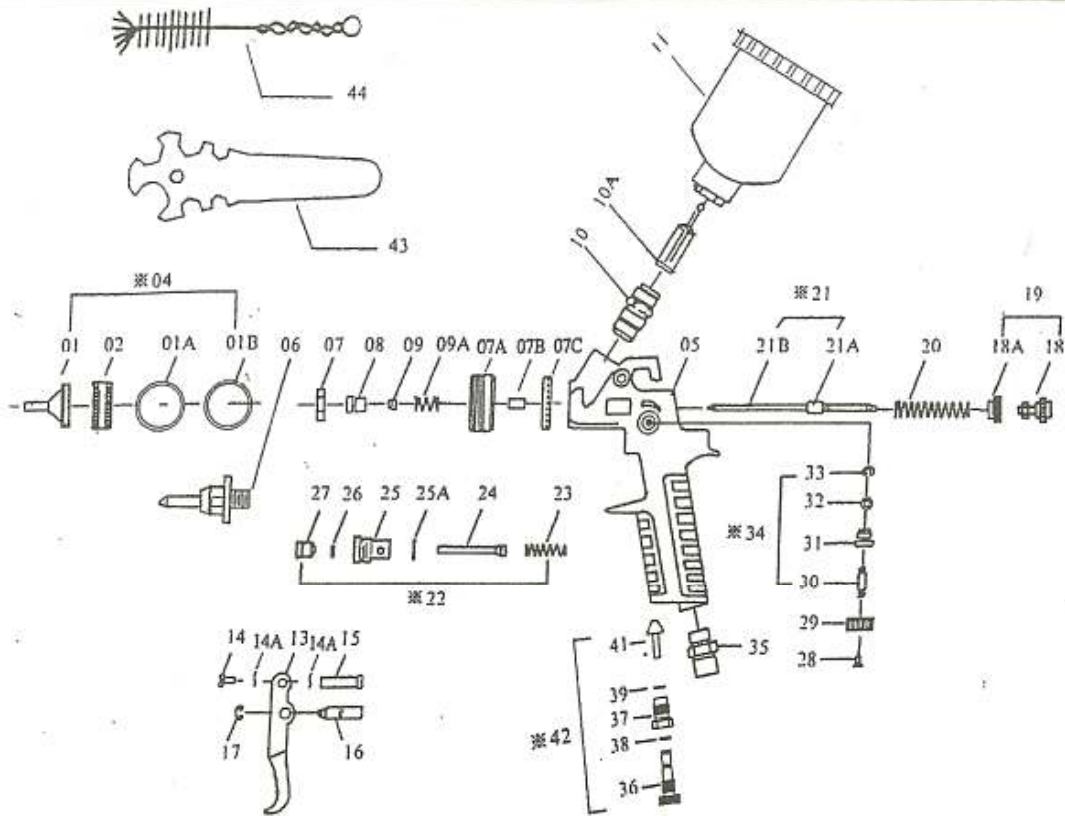
Figure #6 & 7 Screw nozzle into part 07A (nozzle seat) all the way.

Figure #8 Put part 07A on the gun body, using 07B to aim the proper hole as shown.

Figure #9 Check part 07A that it is sitting on the gun body properly.

Figure #10 Use wrench to tighten the nozzle.





Item No.	Description	Item No.	Description
01	Air Nozzle Cap.	27	Screw
01A	Brass Washer	28	Screw
01B	C-Washer	29	Control Knob
02	Brass Cap	30	Spray Regulating Screw
※04	Air Nozzle Cap. Set	31	Spray Regulating Nut
05	Gun Body	32	O-Ring
06	Fluid Nozzle	33	E-Ring
07	Gasket Plastic	※34	Fan control-for round and flat spray
07A	Brass Washer For Fluid Nozzle	35	Air Connection Piece 1/4" Bsp
07B	Brass Washer Pin	36	Control Knob
07C	Teflon Washer For Brass Washer	37	Control Nut
08	Packing Screw	38	O-Ring
09	Teflon Seal	39	E-Ring
09A	Spring	41	Control Stem
10	Connector	42	Air Adjusting Valve Ass'y
10A	Material Sleeve	43	Spanner
11	Aluminum Cup	44	Brush

13	Trigger
14	Trigger Screw
15	Trigger Screw
16	Trigger Pin
17	E-Ring
18	Fluid Control Knob
18A	Lock Nut For Fluid Control Knob
20	Spring For Paint Needle
※21	Needle Valve Ass'y
21A	Paint Needle
21B	Paint Needle
※22	Air Valve Ass'y
23	Spring
24	Air Valve Stem
25	Bushing
25A	P.V.C. Seal
26	Teflon Seal



Repair Kit For Spray Gun
 Parts No:07B 07C 09 09A 14A 17 20 23
 25A 26 33 38 39

Have To Order Complete Set If Special Mark ※※※ !